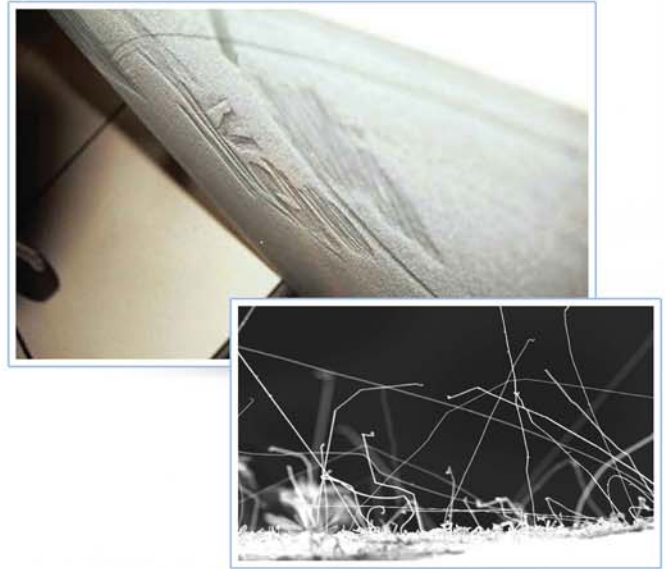


Zinc Needle Remediation

Zinc Needles (or Zinc Whiskers) have been plaguing data centers worldwide for almost 50 years, causing catastrophic downtime in high-tech environments. Zinc Needles arc on circuit boards and power terminals causing downtime. High quantities of zinc may also contribute to bad indoor air quality and "sick building syndrome".

Zinc Needles grow in microscopic hair-like crystal particles on the back of access floor tiles, typically smaller than the eye can see (one twenty-five thousandth of an inch). As Zinc Needle crystals grow, they easily break off into airflow contaminating data center equipment.



Improper Zinc Remediation

- Zinc whiskers are smaller than the human eye can see.
- When Zinc needles are airborne, they attract to energized surfaces (such as PDU's, UPS and circuit boards) causing downtime.
- Breathing zinc whiskers is hazardous for people and equipment in the data center facility.
- Zinc whiskers can migrate on clothes without proper protective equipment.
- Zinc contamination can travel to other areas outside the data center if it is not removed properly and contained.

SET3's remediation program not only removes zinc needles, but also adds a protective layer to mitigate reoccurrence of zinc needles. SET3 has the protocol, equipment, chemicals and experience to remediate zinc effectively.

Zinc Needle Testing

SET3 utilizes qualified labs to do chemical analysis and utilize high-powered microscopes for confirmation of the Zinc Needle growth.

Zinc Needle Remediation

3 stage process for Zinc Needle remediation

- Dissolve Zinc Needles
- Prepare / Decontaminate the surface of the tile
- Application of Antistatic ZN inhibitor sealant

**Call us today
for more information**



www.SET3.com
888-935-0620